

Top Tips to Find Hidden Mobile Savings: Strong Protection and Management

5 billion devices in use in the world today

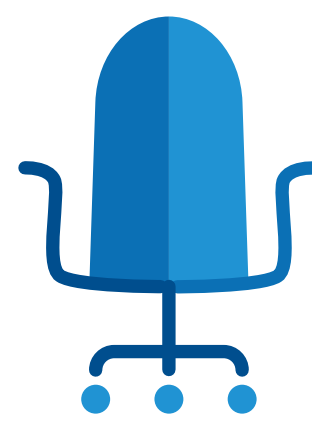
Publish, Promote and Enforce Telecom Policy

Create and publish a clear mobile device policy for all personnel

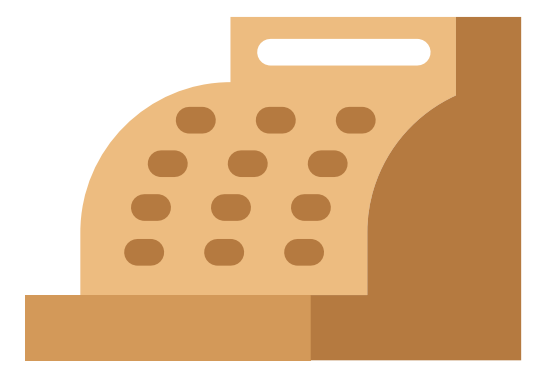
Comply with three levels of regulation



Governmental



Organizational



Vendor

Define

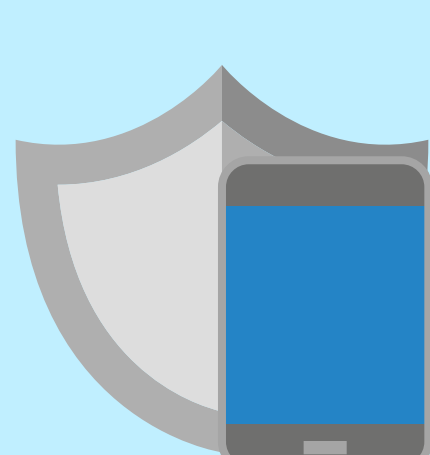
User expectation of privacy



Allowable and acceptable uses of devices



Rules around protecting corporate technologies/ devices/data



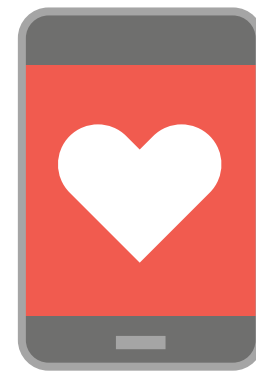
Procedures required around obtaining/ returning/ maintaining and repairing corporate mobile device assets

Enforcement Prioritize actively and effectively enforcing policies

Distinguishing and Dividing Data

Beware - Mobile devices are vulnerable for unauthorized persons to access corporate data

People will use their company-issued device for personal use, making it easy to convey corporate data outside the organization

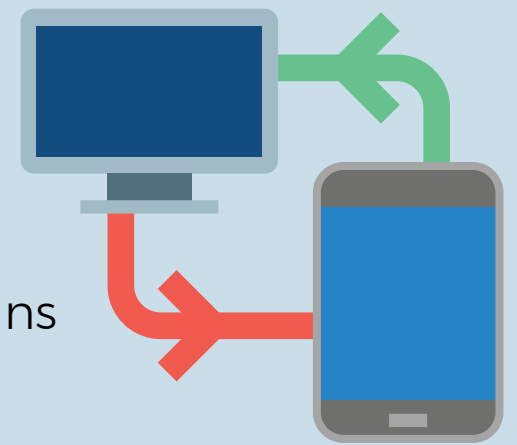


Two ways to mitigate exposure



Containerization and separation of corporate and personal data

Virtual Device Interface (VDI) corporate data runs on data center servers, only sending results in screen appearance, screen-taps and keystrokes



Traveling Globally? Plan Communications Carefully



- Include Global Travel Procedures in your policy
- Always encrypt all data in transit
- Plan for local device rental and feature activation
- Encourage users to use wi-fi to avoid carrier charges

Maintain Granular Vigilance at All Times

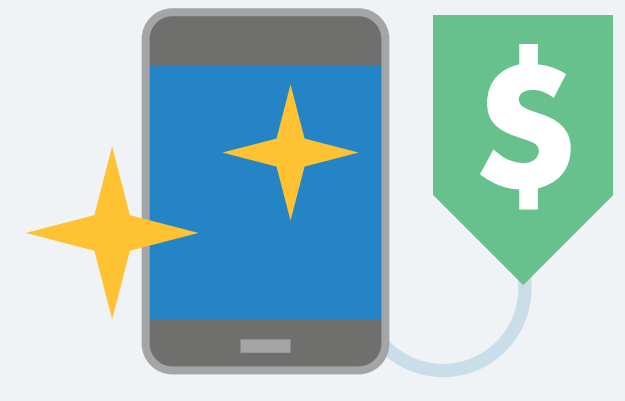
Establish notification from HR when an employee terminates, to account for



Uncollected devices



Forgotten termination of services



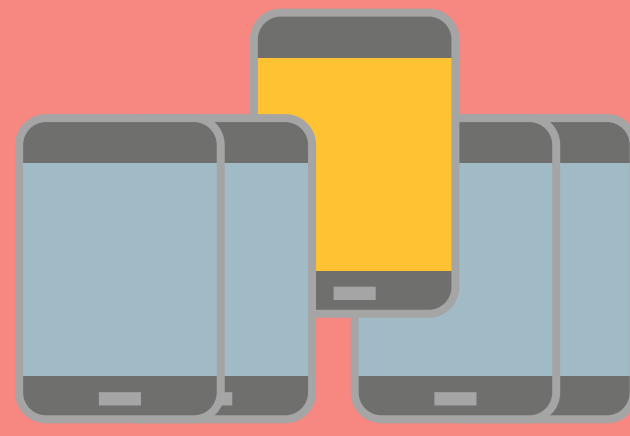
Unnecessary new equipment purchase

... → Regularly inspect inventory for circuits that are unused for 90+ days

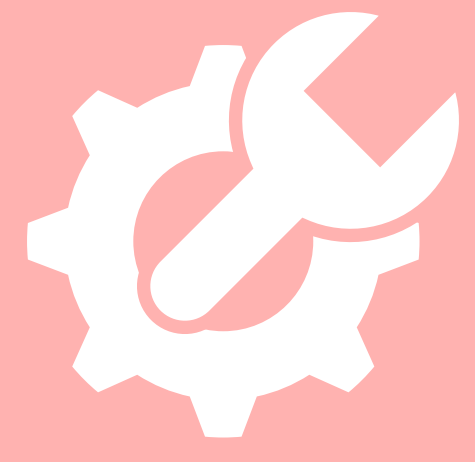
Communication Continuity



Don't rely on a timely vendor repair when a device breaks



Maintain a limited supply of standby devices for quick turnaround



Repair the failed unit using a provider dedicated to telecom device refurbishing and return to inventory

The Importance of Inventory

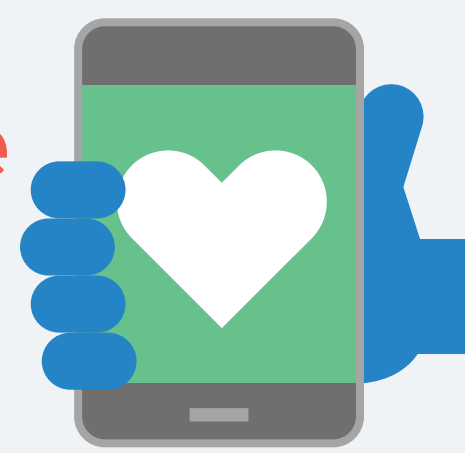


Ability to accurately forecast requirements is greatly facilitated by a constantly accurate inventory



Use inventory to prepare for End of Life situations and service your user community without interruption

Treat Them Like a Lifeline



- Some companies are allowing their employees to work from home indefinitely
- For these employees their mobile device is a critical lifeline of vital communication
- Step up your vigilance, accelerate planning and assure mobile devices are highly effectively managed